

LEGEND

- PROVINCIAL HIGHWAY
- SPECIAL HEAVY HAUL
- PRIMARY GRID
- GRID ROAD
- MAIN FARM ACCESS
- MUNICIPAL ROAD
- PIPELINE
- RAILWAY
- DIVISION LINES

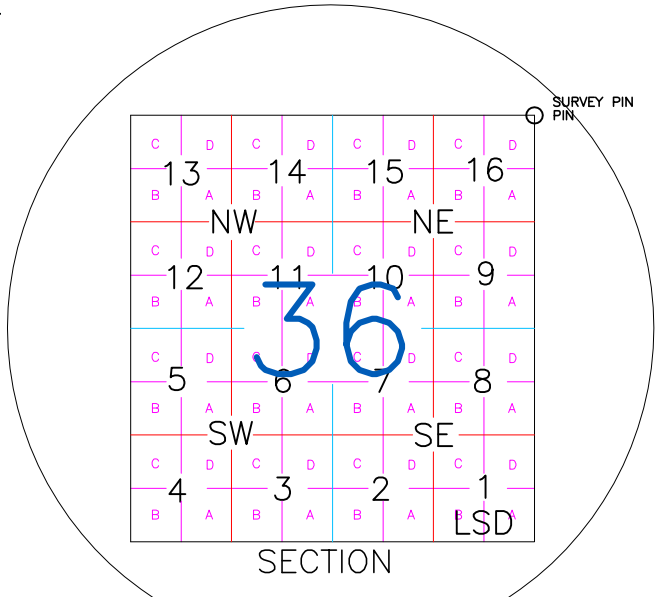
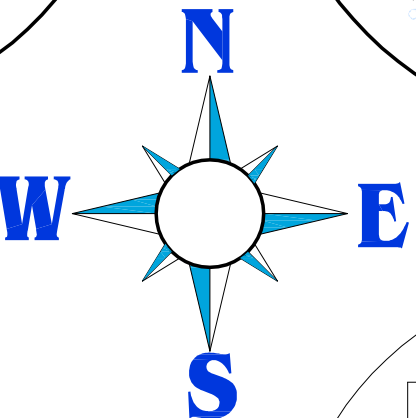
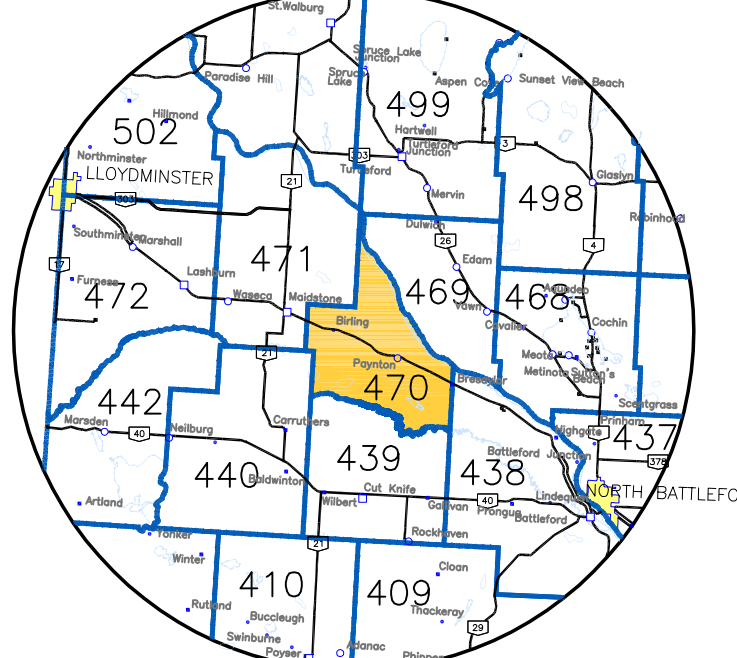
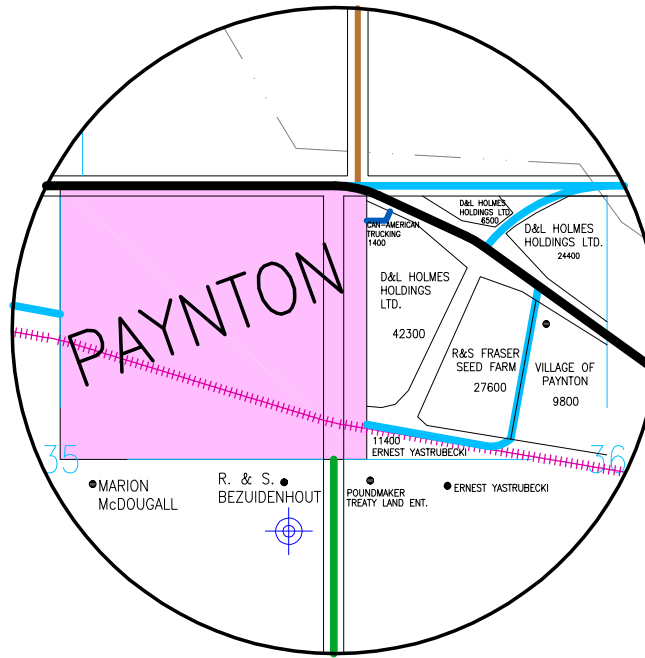
TOWN

- WATER/SLOUGH
- CO-OP PASTURE
- CROWN LAND
- RESERVE LAND
- YARD SITE BRIDGE
- CEMETERY
- COMMUNITY WELL

Box 10
Paynton, Sask.
SOM 2J0
Ph: (306)895-2020
Fx: (306)895-4800
E-mail: rm470@sasktel.net
Admin: MICHELLE BUECHLER
Office Ass't: Christine Currie

REEVE- KEVIN GARRETT
COUNCILLORS
DIV. 1- ALBERT DUHAIME
DIV. 2- RYAN SAYERS
DIV. 3- SHELDON RHINEHART
DIV. 4- ADAM BUGG
DIV. 5- TERANCE GREGSON
DIV. 6- CLINT CURRIE

SURROUNDING AREA



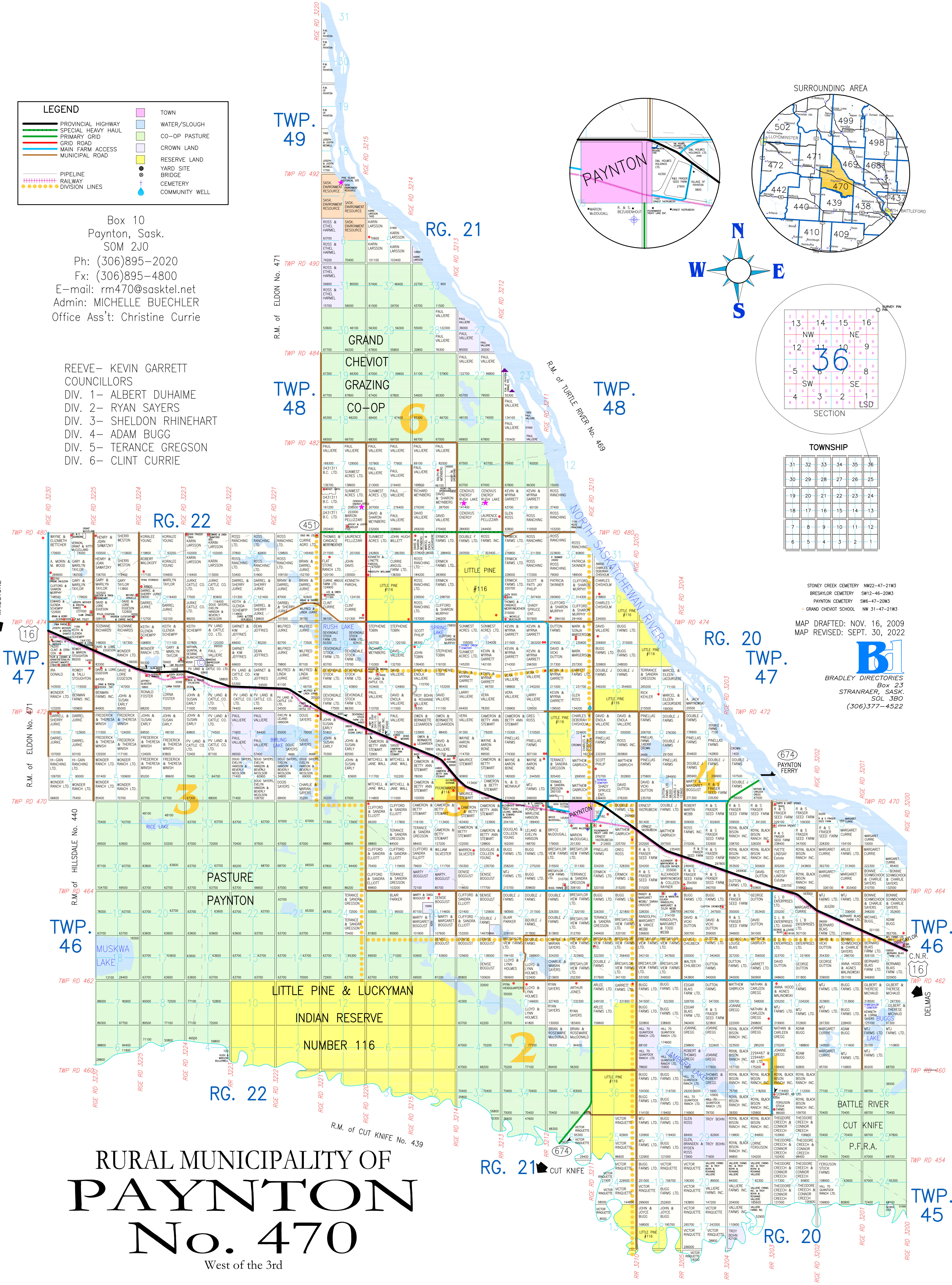
TOWNSHIP

31	32	33	34	35	36
30	29	28	27	26	25
19	20	21	22	23	24
18	17	16	15	14	13
6	5	4	3	2	1

STONEY CREEK CEMETERY HW22-47-21W3
BRESAYLOR CEMETERY SW12-46-20W3
PAYNTON CEMETERY SW6-47-20W3
GRAND CHEVOT SCHOOL NW 31-47-21W3

MAP DRAFTED: NOV. 16, 2009
MAP REVISED: SEPT. 30, 2022

B
BRADLEY DIRECTORIES
Box 23
STRANRAER, SASK.
SOL 3B0
(306)377-4522



RURAL MUNICIPALITY OF
PAYNTON
No. 470
West of the 3rd

R.M. of BATTLE RIVER No. 438

R.M. of CUT KNIFE No. 439

R.M. of TURTLE RIVER No. 469

R.M. of DELMAS